

# Introduction



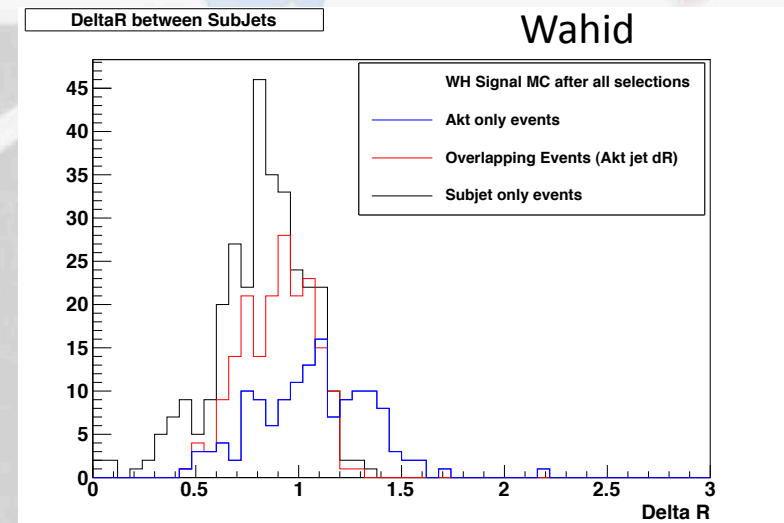
Ricardo Gonalo (RHUL)  
Higgs Weekly Meeting – 15 March 2012

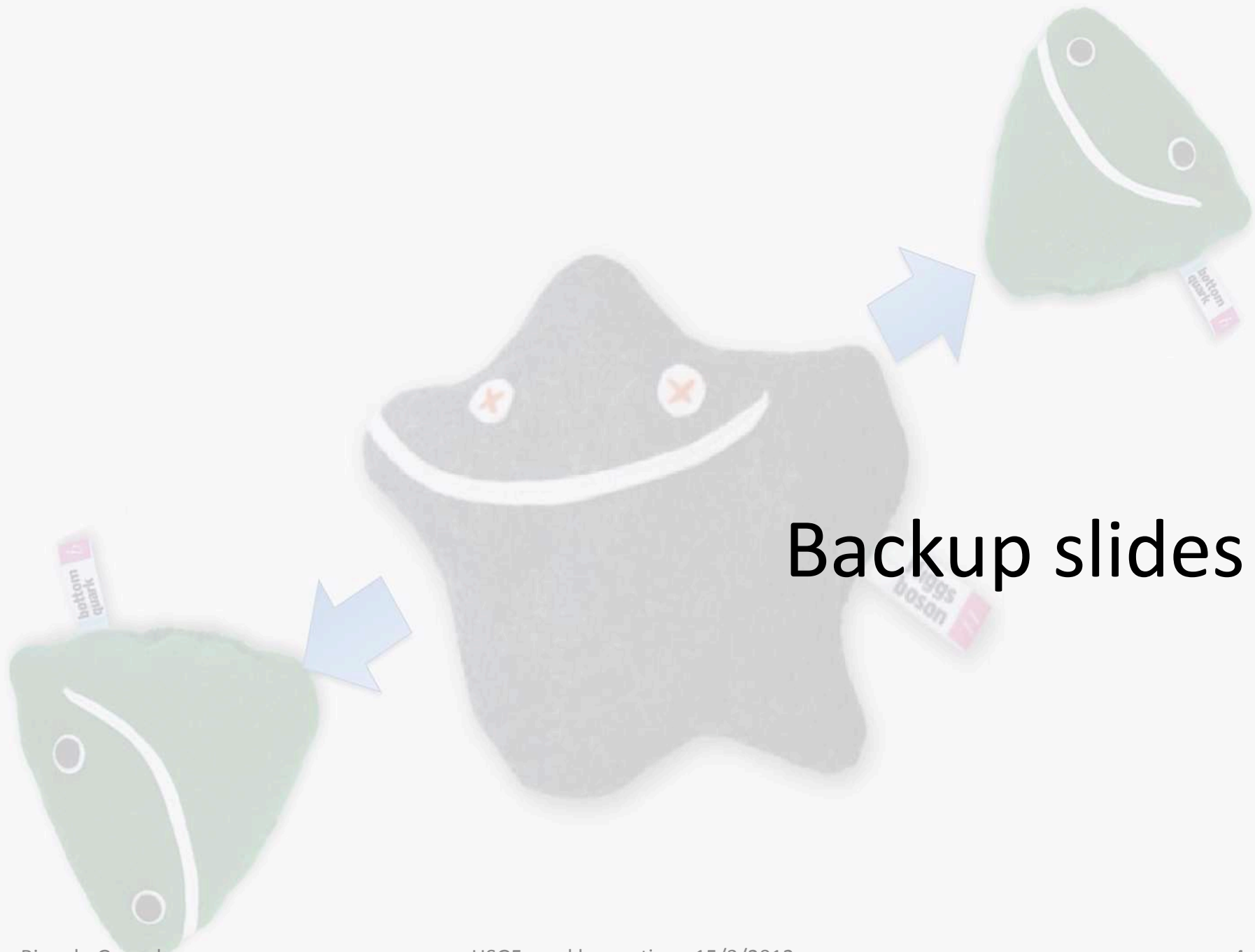
# To do list for paper

- Time scale: end of March/beginning of April (discussion on detailed schedule ongoing)
- b-tagging scale factors: waiting for final b-tagging scale factors
  - Delay due to changes after a bug corrected in one of the b-tagging analysis
  - Discussion ongoing with conveners on what to do for H->bb paper
- METUtility: will move to new version for final analysis run
- Jet pileup correction: to be applied for final run – see Jake's talk today
- Di-b-jet mass scale: will apply 5% correction to  $m(b,b)$
- Top normalization scale factors:
  - Changing to new method to improve consistency with W+jets and with ZH->lvbb analysis
- $\Delta R_{jj}$  study: look again at low  $\Delta R_{jj}$  region to answer EB questions
- Limits:
  - Small problems found in H->bb combined limits – cross checks ongoing with Lianliang, Silje and Giacinto
  - Lianliang running toys
- Smoothing of backgrounds:
  - Previously done in llbb/lvbb but not on vvbb – discussion ongoing with stats forum
- Theory uncertainties should be revisited slightly: to do
  - We used LO (Pythia) signal MC and assigned a flat 10% theory uncertainty (acceptance modeled at LO)
  - Apply uncertainty equal to difference between the LO and NLO QCD cross sections
  - Apply EW NLO corrections as a multiplicative factor to cross section in each bin (no effect on acceptance)
  - Cross-check size of uncertainties on  $p_T(W/Z)$  and  $N_{jets}$  distributions
- Variation of single-top,  $W_c$  and  $Z_c$  backgrounds in vvbb analysis: to do for final results
- Update text:
  - Explain better the methods used in analyses, especially concerning multiple scale factors and fits to data etc
  - Should we aim for longer paper or to remove much of the information and aim for a shorter paper?
  - Smoothing of the backgrounds in llbb/lvbb: should be mentioned in support note

# Plans for Summer

- Detailed schedule under discussion...
- Boosted  $H \rightarrow bb$ 
  - Add to WH analysis (maybe ZH) at highest  $p_T^{W/Z}$
- Multivariate analyses
  - Already started, should go to higher priority
- More interaction with CP groups:
  - Jets and MET
    - New corrections and uncertainties coming LC jets?
  - Interaction with b-tagging
    - Improved  $H \rightarrow bb$  b-tagging uncertainty
  - Interaction with Trigger:
    - $v\bar{v}bb$ , VBF  $H \rightarrow bb$ ,  $b(b)H$ , boosted  $Z \rightarrow bb$  trigger
- $t\bar{t}H$  activity ramping up
- $Z \rightarrow bb$  having difficulties:
  - Bug found in  $g \rightarrow bb$  samples – being re-generated
  - Re-produced AFII  $g \rightarrow bb$  – bad description of data
- Other channels to continue pushing the boundaries: VBF  $H \rightarrow bb$ ,  $b(b)H$





# Backup slides