

Releases and Validation

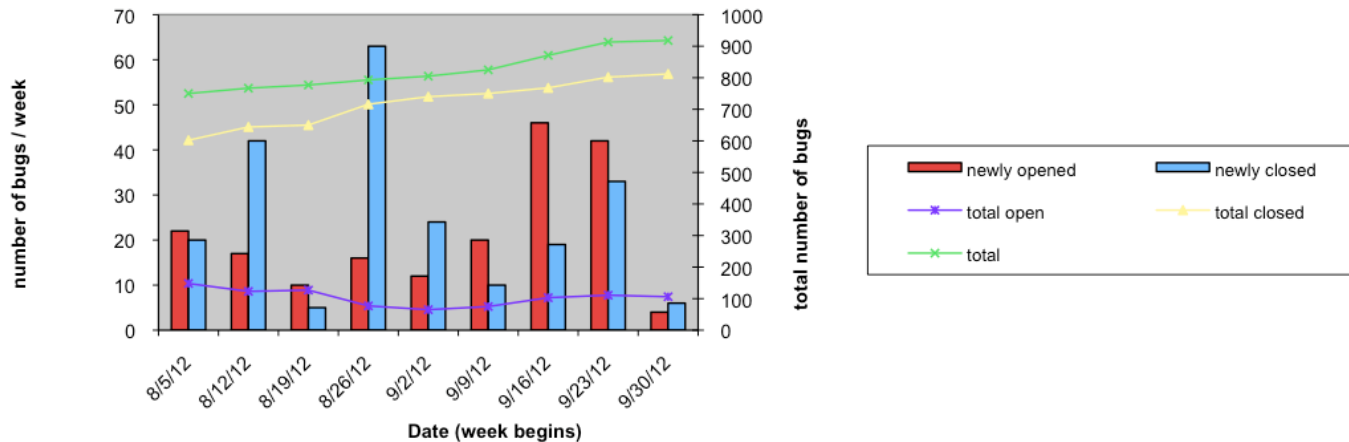
Simon George, Ricardo Goncalo,
David Strom

Trigger Open Meeting
30 September 2008

Release News & Plans

- 14.2.22 built last Friday
 - New base release for Tier0, P1HLT, Production
 - Installed at P1
 - Each release coordinator can decide when to switch
- Future release plans (not yet confirmed)
 - 14.2.30 around mid Oct (bugfix)
 - 14.4.0 end Oct (dev)
 - 14.5.0 end Nov (dev)
 - 15.0.0 end Feb (pro)
- Release plans being discussed
 - Simon pushing to combine 14.2.2X and 14.2.X
 - With hindsight, cost/benefit for HLT is poor
 - Big benefit for us if RC & Val effort could only focus on one
 - Deliverables for 15 have not yet been discussed

Savannah Bugs



Categories

Analysis
 General
 Event Data
 TriggerConfig
 Monitoring
 Steering
 LVL1
 RegionSelector
 Offline
 HLT Algorithms
 HLT Calo
 HLT Muon
 L2 ID tracking
 EF ID tracking
 Minbias slice
 Jet slice
 Tau slice
 ETmiss slice
 B Physics slice
 Bjet slice
 E/gamma slice
 Cosmic slice

- > 40 bugs/week submitted last 2 weeks (average is 10-20)
 - Several reasons:
 - Tier0 now has shifts to submit bugs and 3-day escalation procedure
 - Several bugs found by us in online running
 - We deal with bugs on a ad-hoc basis (no formal shifts) – sometimes big delays
- Savannah Notification:
 - Savannah has a ‘notification’ feature
 - For each category, list of addresses to automatically email when a bug changes
 - So far we have used the global list, with release and validation coordinators subscribed
 - Plan
 - Expand HLT algorithms category: ~half of all assigned bugs
 - Extend notification lists to all slices and core categories
 - Benefits:
 - CC all relevant people from the moment the category is set
 - improve response time
 - easier for non expert and consistent

Handling parallel releases

Multiple parallel releases have been leading to problems

- Inconsistencies between AtlasP1HLT/AtlasTier0/14.2.2X releases/nightlies
 - Raw (BS) data taken online must be readable by all releases
 - Set up backward compatibility tests to read old BS; already have tests on real data (D. Strom)
 - Menus and associated job options can be different in the release used to produce the data and to read it, since they are taken from config. DB
 - For analysis/validation work need AtlasAnalysis project: write ESD using P1HLT and then use Tier0 or 14.2.2X to read it; menu in metadata residing in ESD file
 - Sylvie Brunet has become the trigger contact for Tier0 which should also help
- Concern that necessary tags are not propagated from 14.2.X to AtlasP1HLT
 - Reviewing differences in regular phone meeting with 14.2.X and P1HLT release coordinators and Simon.
- Menu bundles entering 14.2.X are not consistent, causing long periods of failed nightlies.
 - Menus group has agreed to specifically test and submit bundles for AtlasProduction and 14.2.X on a regular basis, so production keeps up with P1
 - Tag collection tools can help, but different releases always require separate testing
- In conclusion: ask release coordination for fewer different releases
 - e.g. combine 14.2.2X with 14.2.X.

Validation rota

- Validation rota can now be booked in OTP: task 52032 - Slice Validation

The screenshot shows the OTP interface with a search for tasks. The search criteria are: Quick Search (empty), Task ID (empty), System (TRT, LVL1, LAr, Muon, DAQ/HLT), Allocated Person Name (empty), Allocated Person's Institute (empty), Allocated Person's Funding Agency (empty), Start Date Between (empty), and End Date Between (empty). The search results table is as follows:

Id	Title
52031	Release and Validation General
52032	Slice Validation
52033	Overall Validation
52034	Infrastructure
52035	Online validation (covered in online integration)
52036	Data quality